



**little sizes**



**big spaces**

# NATIVA

gres porcellanato  
porcelain stoneware

## formati . size

### multiformato . multisize

25x50 . 10"x20"

25x25 . 10"x10"

12,5x25 . 5"x10"

25x50 . 10"x20"

25x25 . 10"x10"

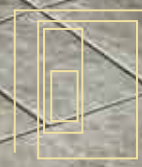
12,5x25 . 5"x10"

16x40 . 6"x16"



Effetto pietra  
in gres  
porcellanato  
Stone effect  
in porcelain  
stoneware

NATIVA  
BARGE



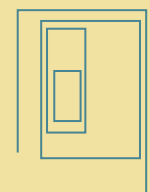
Riv./Wall  
NATIVA LIGHT  
16x40 . 6"x16"  
Pav./Floor  
NATIVA MULTIFORMATO ARGENTO

# NATIVA QUARZITE



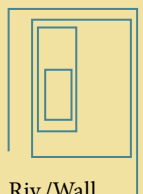
Riv./Wall  
NATIVA LIGHT e DARK  
16x40 . 6"x16"

Pav./Floor  
NATIVA MULTIFORMATO  
NERO





# NATIVA QUARZITE



Riv./Wall  
NATIVA MEDIUM  
16x40 . 6"x16"

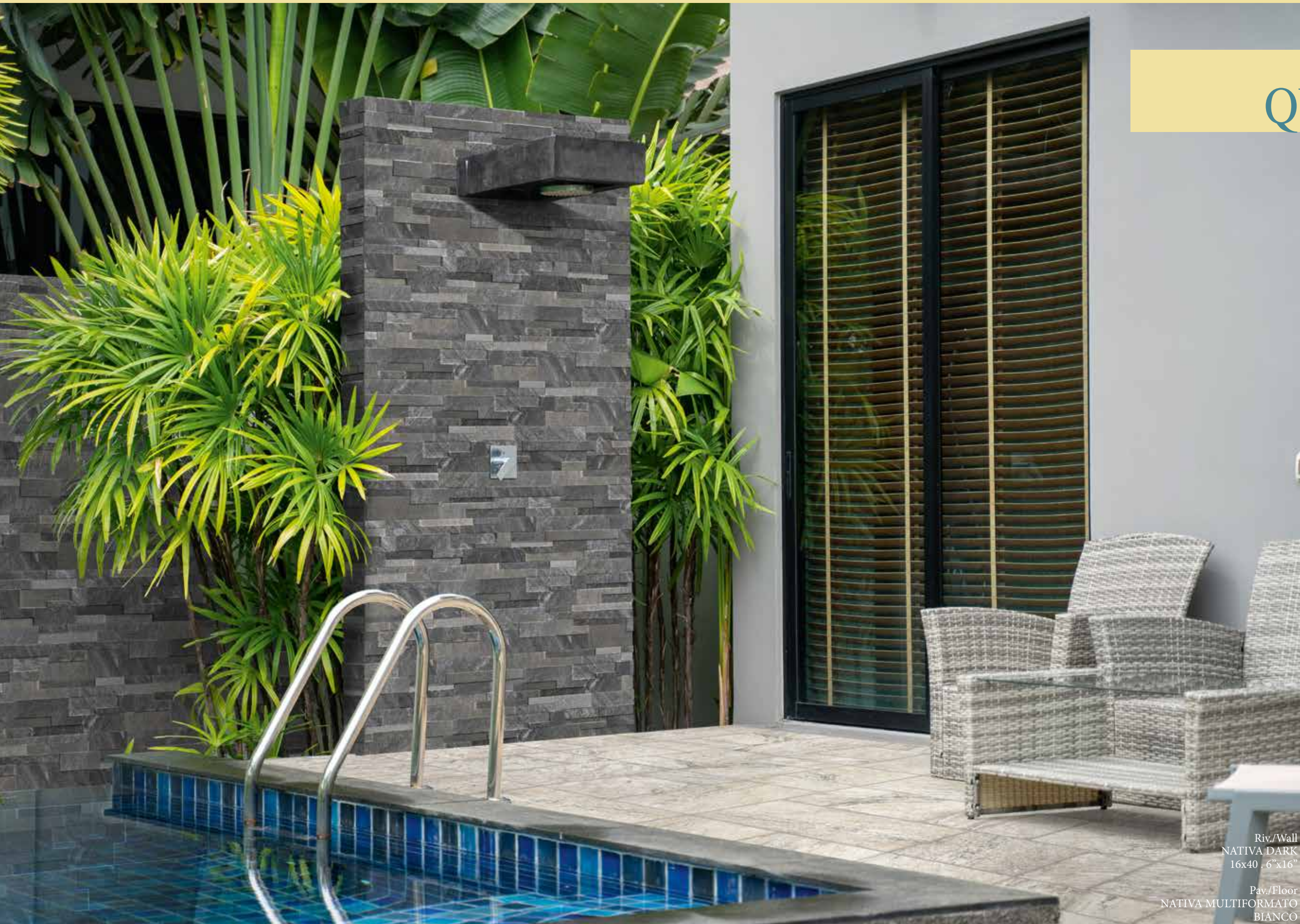
Pav./Floor  
NATIVA  
MULTIFORMATO  
BIANCO



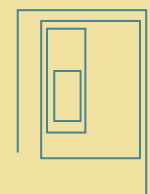
Riv./Wall  
ALLS ORE VULCANT BIANCO  
16x40 . 6"x16"

Pav./Floor  
NATIVA MIX  
12,5x25 . 5"x10"

# NATIVA QUARZITE



Riv./Wall  
NATIVA DARK  
16x40 . 6"x16"  
Pav./Floor  
NATIVA MULTIFORMATO  
BIANCO



# NATIVA QUARZITE



Riv./Wall  
NATIVA BIANCO  
12,5x25 . 5"x10"

Pav./Floor  
NATIVA MULTIFORMATO  
BIANCO





# NATIVA QUARZITE



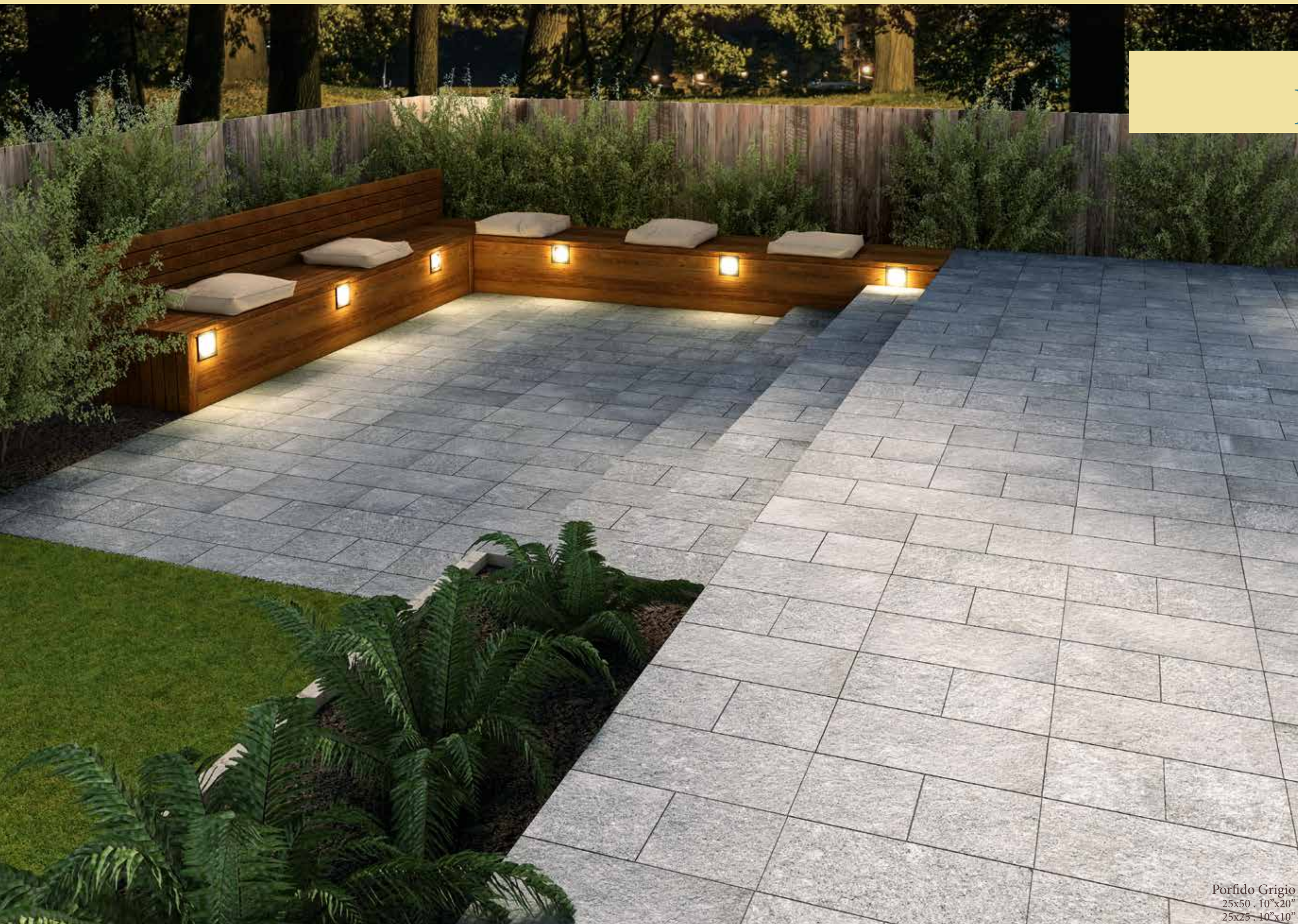
Pav./Floor  
NATIVA NERO  
12,5x25 . 5°x10°



Riv./Wall  
NATIVA MEDIUM  
16x40 . 6"x16"

Pav./Floor  
NATIVA MULTIFORMATO  
ORO

# NATIVA PORFIDO



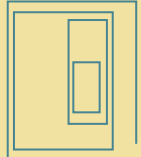
Porfido Grigio  
25x50 . 10"x20"  
25x25 . 10"x10"



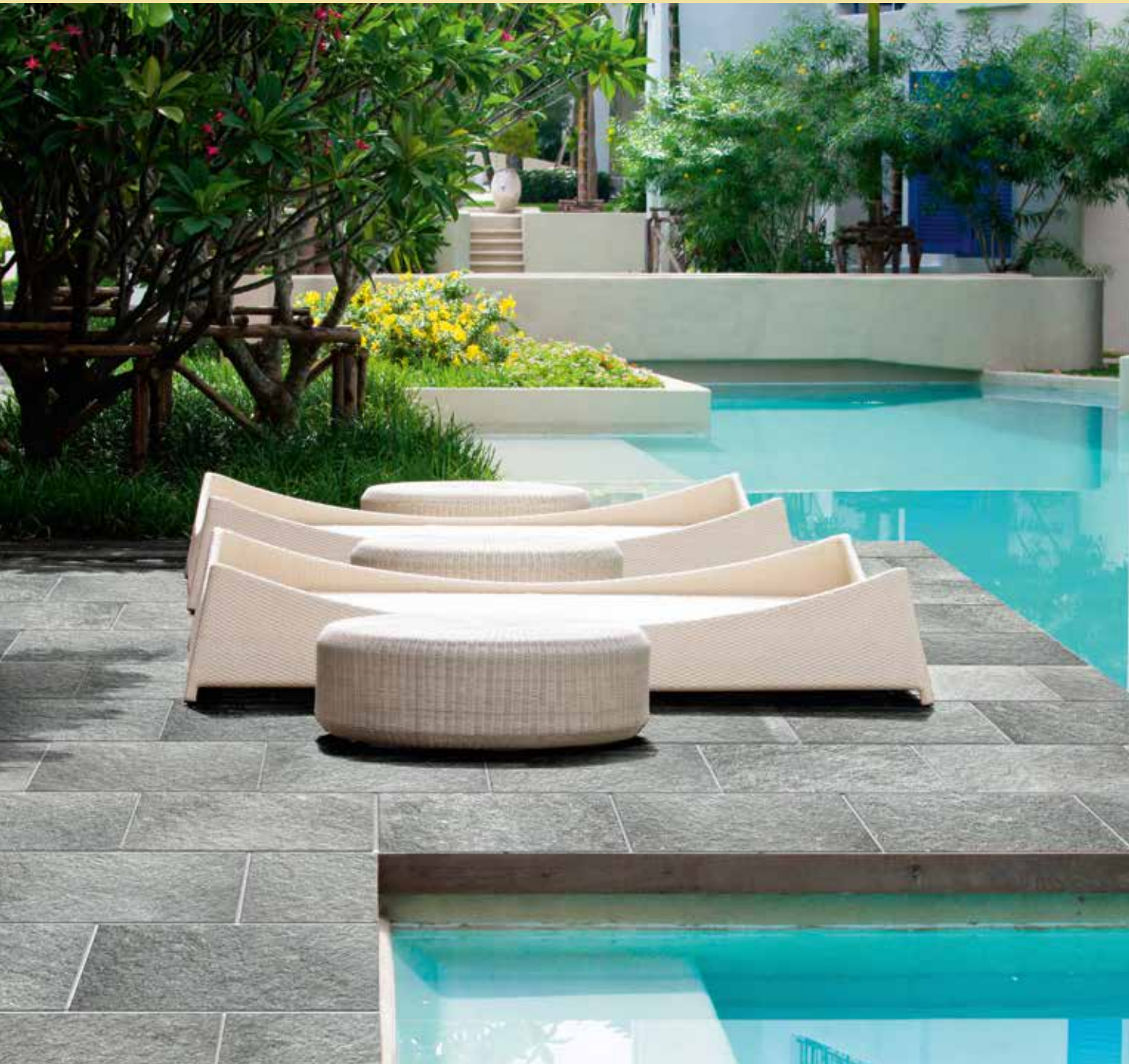


Porfido Grigio  
25x50 . 10"x20"  
25x25 . 10"x10"

# NATIVA PORFIDO



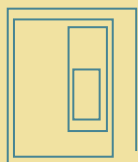
Porfido Grigio  
25x50 . 10"x20"



Porfido Grigio  
25x50 . 10"x20"



# NATIVA PORFIDO



Porfido Rosso  
25x50 . 10"x20"  
25x25 . 10"x10"



Porfido Rosso  
25x50 . 10"x20"  
25x25 . 10"x10"

# NATIVA PORFIDO



Porfido Rosso  
25x50 . 10"x20"  
25x25 . 10"x10"



Porfido Rosso  
25x50 . 10"x20"  
25x25 . 10"x10"



# NATIVA ARGENT



Argent Silver  
25x50 . 10"x20"  
12,5x25 . 5"x10"





Argent Silver  
25x50 . 10"x20"  
25x25 . 10"x10"

# NATIVA ARGENT



Argent Silver  
25x50 . 10"x20"



# NATIVA ARGENT



Argent Ivory  
25x50 . 10"x20"  
12,5x25 . 5"x10"





Argent Ivory  
25x50 . 10"x20"  
12,5x25 . 5"x10"



NATIVA  
ARGENT



Argent Ivory  
25x50 . 10"x20"  
12,5x25 . 5"x10"

# NATIVA LUSERNA



Luserna  
25x50 . 10"x20"  
25x25 . 10"x10"



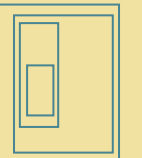


Luserna  
25x50 . 10"x20"  
25x25 . 10"x10"

# NATIVA LUSERNA



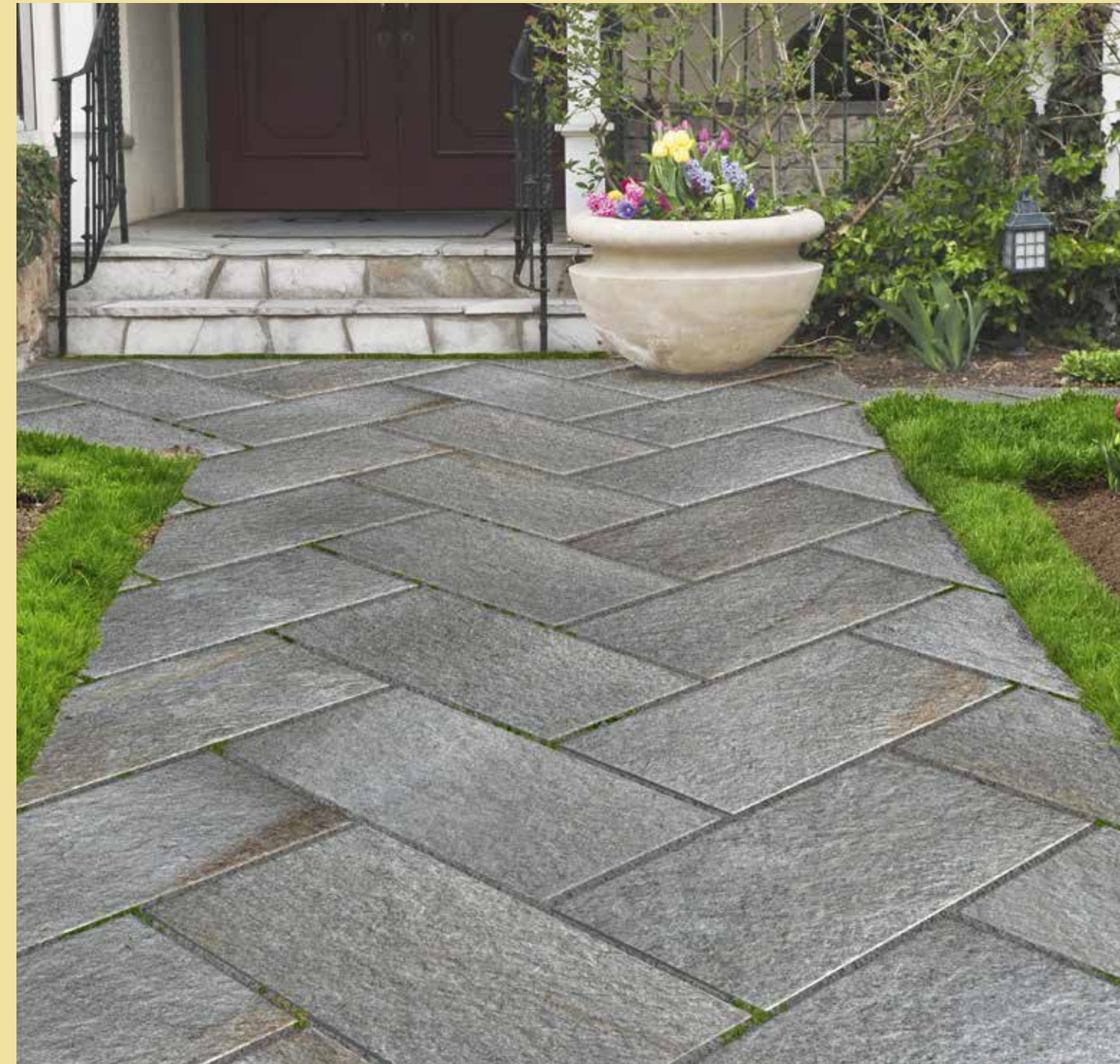
# NATIVA LUSERNA



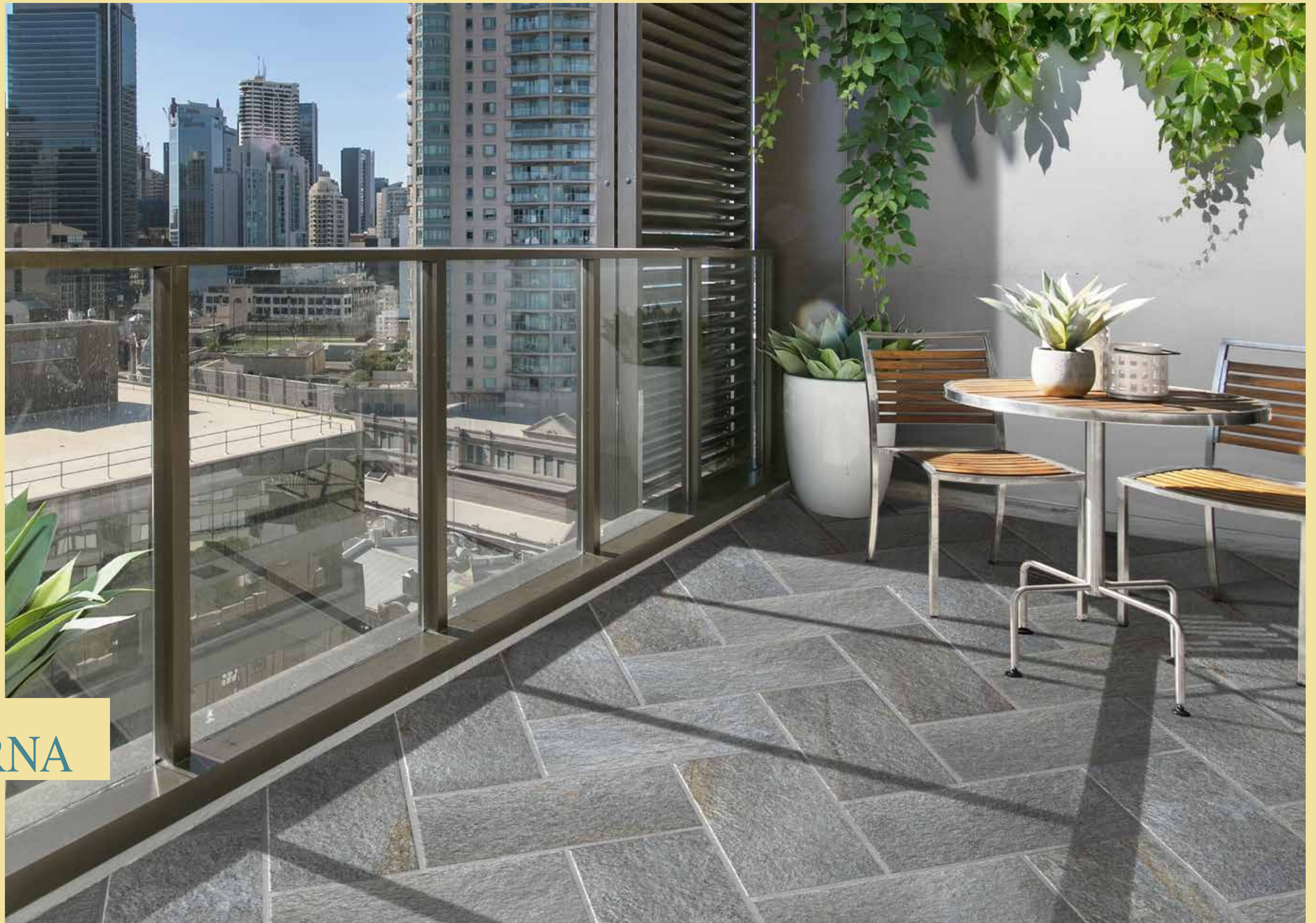
Luserna  
25x50 . 10"x20"



Luserna  
25x25 . 10"x10"







NATIVA  
LUSERNA



Luserna  
25x50 . 10"x20"

NATIVA

SUPERFICI  
SURFACES

50

QUARZITE

A close-up photograph of a quartzite surface, showing a complex, layered, and somewhat crystalline texture with various shades of grey and white.

BARGE

A photograph of a barge surface, which appears as a smooth, uniform, light grey material with a fine, consistent grain.

ARGENT STONE

A photograph of Argent Stone, a light grey surface with a fine, speckled texture containing small, dark, irregular spots.

51

PORFIDO

A photograph of a porfido surface, characterized by a dense, granular texture with a mix of light and dark grey tones.

LUSERNA

A photograph of a Luserna surface, showing a dark grey, highly textured and granular appearance with some lighter, irregular patches.

# NATIVA QUARZITE

gres porcellanato . porcelain stoneware

formati . sizes:  
25x50 . 10"x20" - 25x25 . 10"x10" - 12,5x25 . 5"x10" - 16x40 . 6"x16"

## Mix

sviluppo grafico . design development



25x50 . 10"x20"



**2550KNAMX**  
■ M19

25x25 . 10"x10"



**2525KNAMX**  
■ M19

12,5x25 . 5"x10"



**1225KNAMX**  
■ M19

## Nero

sviluppo grafico . design development



25x50 . 10"x20"



**2550KNANE**  
■ M19

25x25 . 10"x10"



**2525KNANE**  
■ M19

12,5x25 . 5"x10"



**1225KNANE**  
■ M19

\*multiformato . multisize



M <sup>2</sup> - Sqm / Box: 0,75		Pcs/Box
formato / size 12,5x25 . 5"x10"	25%	6
formato / size 25x25 . 10"x10"	25%	3
formato / size 25x50 . 10"x20"	50%	3

\*multiformato . multisize



M <sup>2</sup> - Sqm / Box: 0,75		Pcs/Box
formato / size 12,5x25 . 5"x10"	25%	6
formato / size 25x25 . 10"x10"	25%	3
formato / size 25x50 . 10"x20"	50%	3

\*multiformato . multisize: 10 strutture diverse miscelate nella scatola /10 different structures randomly mixed in the box  
12,5x25 cm . 52x10": 4 strutture diverse miscelate nella scatola /4 different structures randomly mixed in the box

## Bianco

sviluppo grafico . design development



25x50 . 10"x20"



**2550KNABI**  
■ M19

25x25 . 10"x10"



**2525KNABI**  
■ M19

12,5x25 . 5"x10"



**1225KNABI**  
■ M19

\*multiformato . multisize



M <sup>2</sup> - Sqm / Box: 0,75		Pcs/Box
formato / size 12,5x25 . 5"x10"	25%	6
formato / size 25x25 . 10"x10"	25%	3
formato / size 25x50 . 10"x20"	50%	3

# NATIVA BARGE



gres porcellanato . porcelain stoneware

**\*multiformato . multisize: 10 strutture diverse miscelate nella scatola**  
**10 different structures randomly mixed in the box**  
**12,5x25 cm . 52x10": 4 strutture diverse miscelate nella scatola**  
**4 different structures randomly mixed in the box**

formati . sizes:  
 25x50 . 10"x20" - 25x25 . 10"x10" - 12,5x25 . 5"x10" - 16x40 . 6"x16"

Oro sviluppo grafico . design development



**\*multiformato . multisize**



M <sup>2</sup> - Sqm / Box: 0,75		Pcs/Box
formato / size 12,5x25 . 5"x10"	25%	6
formato / size 25x25 . 10"x10"	25%	3
formato / size 25x50 . 10"x20"	50%	3

# NATIVA ARGENT



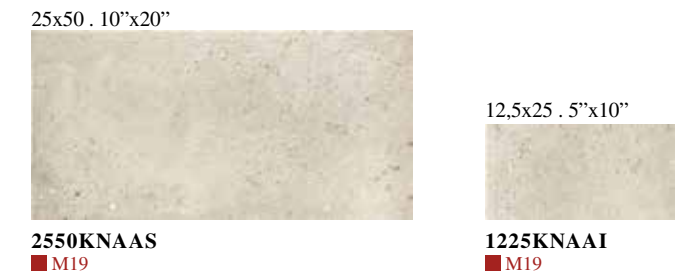
gres porcellanato . porcelain stoneware

formati . sizes:  
 25x50 . 10"x20" - 12,5x25 . 5"x10"

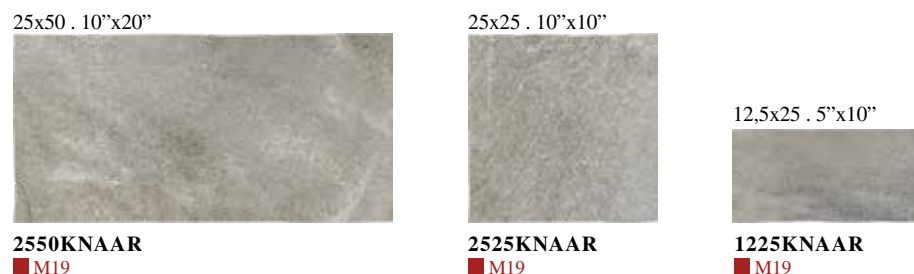
sviluppo grafico design development



Argent Ivory sviluppo grafico design development



Argento sviluppo grafico . design development



**\*multiformato . multisize**



M <sup>2</sup> - Sqm / Box: 0,75		Pcs/Box
formato / size 12,5x25 . 5"x10"	25%	6
formato / size 25x25 . 10"x10"	25%	3
formato / size 25x50 . 10"x20"	50%	3

2550KNAAR ■ M19      2525KNAAR ■ M19      1225KNAAR ■ M19

2550KNAAS ■ M19      1225KNAAI ■ M19

# NATIVA PORFIDO

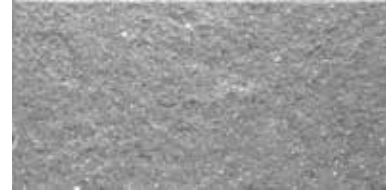
gres porcellanato . porcelain stoneware

formati . sizes:  
25x50 . 10"x20" - 25x25 . 10"x10"

Porfido Grigio sviluppo grafico  
design development

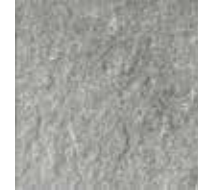


25x50 . 10"x20"



**2550KNAPG**  
■ M19

25x25 . 10"x10"



**2525KNAPG**  
■ M19

Porfido Rosso sviluppo grafico  
design development



25x50 . 10"x20"



**2550KNAPR**  
■ M19

25x25 . 10"x10"



**2525KNAPR**  
■ M19



# NATIVA LUSERNA

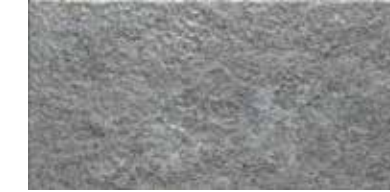
gres porcellanato . porcelain stoneware

formati . sizes:  
25x50 . 10"x20" - 25x25 . 10"x10"

Luserna sviluppo grafico  
design development



25x50 . 10"x20"



**2550KNALU**  
■ M19

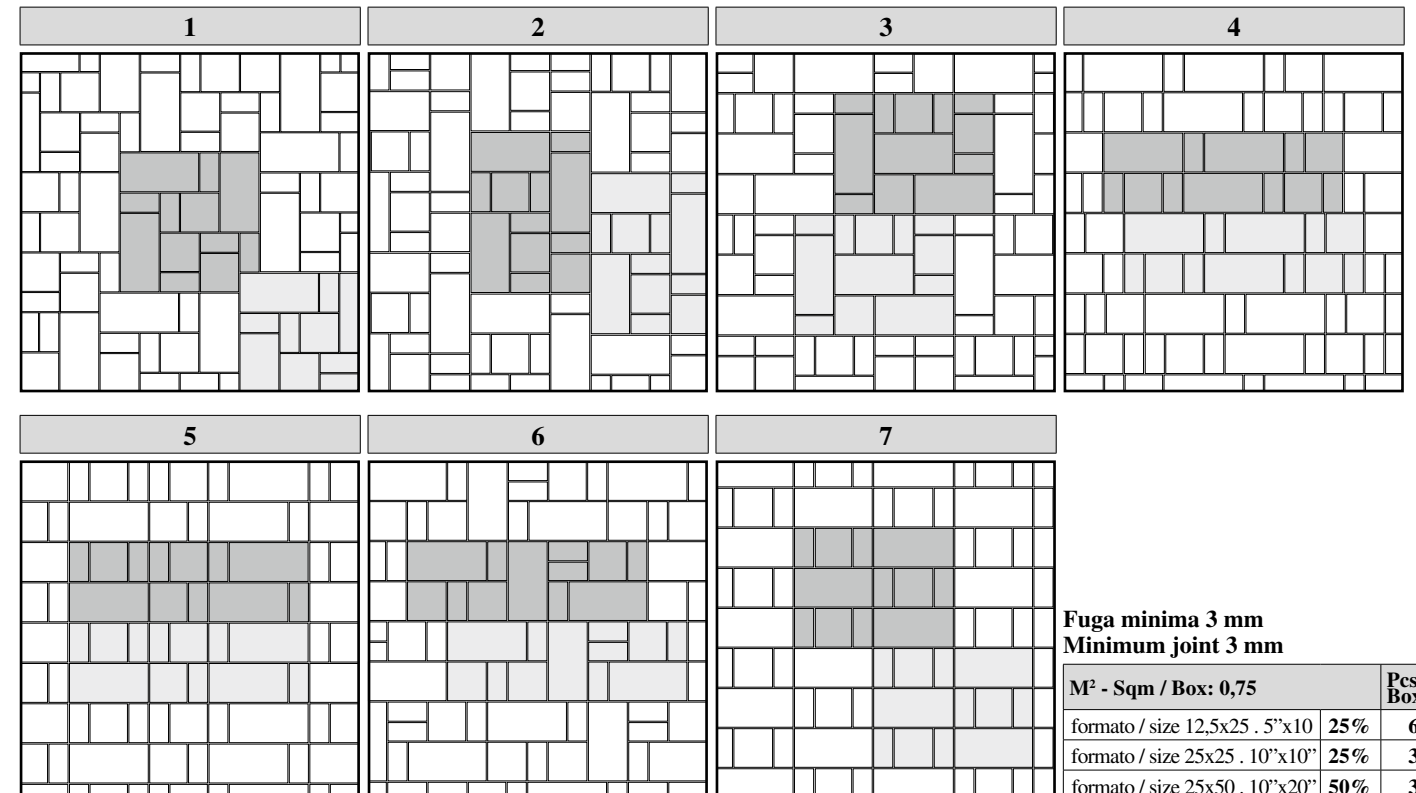
25x25 . 10"x10"



**2525KNALU**  
■ M19



Moduli multiformato . Forms multisize:



Fuga minima 3 mm  
Minimum joint 3 mm

M <sup>2</sup> - Sqm / Box: 0,75		Pcs/ Box
formato / size 12,5x25 . 5"x10"	25%	6
formato / size 25x25 . 10"x10"	25%	3
formato / size 25x50 . 10"x20"	50%	3

\*\* 3 strutture diverse miscelate nella scatola / 3 different structures randomly mixed in the box

## NATIVA

### Nativa Light

\*\*sviluppo grafico . design development



16x40 . 6"x16"



**16KNALI**  
■ M06

### Nativa Medium

\*\*sviluppo grafico . design development



16x40 . 6"x16"



**16KNAME**  
■ M06

### Nativa Dark

\*\*sviluppo grafico . design development



16x40 . 6"x16"



**16KNADA**  
■ M06



#### imballi e pesi . packing and weight

Formato (cm) Size (inches)	Spessore / Thickness mm	Pcs / Box	M <sup>2</sup> / Box	Kg / Box	Box / Pallet	M <sup>2</sup> / Pallet	Kg / Pallet
multiformato . multisize	10	12	0,75	14,00	72	54,00	1030
25x50 cm . 10"x20"	10	10	1,25	24,7	48	60,00	1186
25x25 cm . 10"x10"	10	19	1,19	23,5	54	64,26	1269
12,5x25 cm . 5"x10"	10	23	0,72	13,50	81	58,32	1110
16x40 cm . 6"x16"	min.8/ max12	15	0,96	16,40	60	57,60	1010
Elemento "L" 30x15x4	10	6	-	6,00	-	-	-
Gradone monolitico 30x33,3	10	6	-	15,00	-	-	-
Angolare monolitico 33,3x33,3	10	2	-	12,8	-	-	-
Angolo esterno incollato	min.8/ max12	6	-	6,65	36	-	260

#### \*pezzi speciali . special pieces

	Elemento "L" Antislip 30x15x4 ▲ P10
	Gradone monolitico 30x33,3 ▲ P12
	Angolare monolitico 33,3x33,3 ▲ P13
	*Angolo esterno incollato 31,5x6,5x16 h ▲ P20

\*Disponibile anche nel formato / Also available in:  
cm 24,5x13,5x16 h - 9,5"x5"x6" h

\*Disponibili in tutti i colori.  
Available in all colours.

Caratteristiche tecniche Technical characteristics Caractéristiques techniques Technische merkmale		Norma di riferimento Reference standard Norme de reference Prüfmethode	Valore richiesto Required value Valeur requise Sollwert			
	Dimensioni Dimensions Dimensions Abmessungen	ISO 10545-2	Conforme Compliant Conforme Konform			
	Assorbimento d'acqua Water absorption Absorption d'eau Wasseraufnahme	ISO 10545-3	≤ 0,5 %			
	Resistenza a flessione Modulus of rupture Resistance a la flexion Biegefestigkeit	ISO 10545-4	Modulus of rupture R ≥ 35 N/mm <sup>2</sup> Breaking strength S ≥ 1300 n			
	Resistenza all'abrasione Abrasion resistance Résistance à l'abrasion Abriebbeständigkeit	ISO 10545-7	PEI Solo per piastrelle smaltate Only for glazed tiles			
	Dilatazione termica lineare Linear thermal expansion Dilatation thermique lineaire Lineare Wärmeausdehnung	ISO 10545-8	=< 9x10 <sup>-5</sup> °C <sup>-1</sup>			
	Resistenza agli sbalzi termici Thermal shock resistance Resistance aux écarts de température ITemperaturwechselbeständigkeit	ISO 10545-9	Resistente Resistant Resistant Beständig			
	Resistenza al gelo Frost resistance Resistance au gel Frostbeständigkeit	ISO 10545-12	Resistente Resistant Resistant Beständig			
	Resistenza agli acidi ed alle basi Acid and alkali resistance Resistance aux acides et aux bases Säure- und Laugenbeständigkeit	ISO 10545-13	CLASS GB MIN.			
	Resistenza all'attacco chimico Chemical resistance Resistance à l'attaque chimique Chemische Beständigkeit	ISO 10545-13	CLASS GB MIN.			
	Resistenza alle macchie Stain resistance Resistance au taches Fleckenbeständigkeit	ISO 10545-14	CLASS 3 MIN.			
	Coefficiente di attrito (scivolosità) Friction coefficient (slipperiness) Coefficient de friction (glissement) Reibungskoeffizient (Rutschigkeit)	BCR - Italia DM del 14-06-89	Dry rubber 0,62	Wet rubber 0,51	Dry leather 0,62	ASTM - USA ASTM C1028 Dry neolythe 0,69 Wet neolythe 0,62

THE PRODUCTS HAVING AN ABSORPTION < 0,5% ARE CLASSIFIED ACCORDING THE UNI CEN STANDARDS "FULLY VITRIFIED TILES" AND ACCORDING TO THE ASTM STANDARDS "IMPERVIOUS TILES"

## listino prezzi €/mq. - iva esclusa price list €/SQ.M. - vat excluded

CODICE CODE	Pallet intero Full pallet	Spallettizzato Split pallet
■ M03	37,50	46,88
■ M04	31,10	38,88
■ M06	36,00	45,00
■ M19	29,40	36,75
■ M23	30,30	37,88
■ M42	34,80	43,50
■ M43	45,30	56,60

## pezzi speciali €/pezzo special pieces €/per piece

CODICE CODE	
▲ P10	13,40
▲ P12	41,50
▲ P13	69,40
▲ P20	25,00
▲ P27	19,00
▲ P28	38,00
▲ P44	2,00

## simbologia - symbology

tonalità miscelate - shading variation



V1



V2



V3



V4

aspetto uniforme    variazione minima    variazione moderata    variazione sostanziale  
uniform appearance    slight variation    moderate variation    substantial variation

## note - notes

Le informazioni contenute nel presente catalogo sono il più possibile esatte, ma non sono da ritenersi legalmente vincolanti. Per esigenze di produzione l'Azienda si riserva il diritto di apportare eventuali modifiche che si rendessero necessarie. Peso, colori e misure sono soggetti alle inevitabili variazioni tipiche del processo di cottura della ceramica. I colori si avvicinano il più possibile a quelli reali nei limiti consentiti dai processi di stampa.

The information contained in this catalogue is as accurate as possible, but cannot be considered as legally binding. The Company reserves the right to make any modifications that become necessary due to production requirements. Weight, colours and dimensions are subject to the inevitable variations typical of the ceramic firing process. The colours are as close as possible to the actual colours, within the limits allowed by the printing process.



progetto grafico: EUREKA

stampa:

Ottobre 2020







Tel. + 39 0522 843821

Fax + 39 0522 840645

[info@ceramichemac3.it](mailto:info@ceramichemac3.it)

[www.keradom.it](http://www.keradom.it)



KERADOM s.r.l. Via Botticelli, 10\_42048 Rubiera (RE)\_Italy