

SistemC – Architettura

– Monoporosa • Porous Single Firing • Monoporeuse • Poröse Einbrandfliese • Monoporosa • Монопороза
 – Monocottura • Single Firing • Monocuisson • Einmalbrand • Monococción • Плитка Однократного Обжига

 **Lux**
20x20

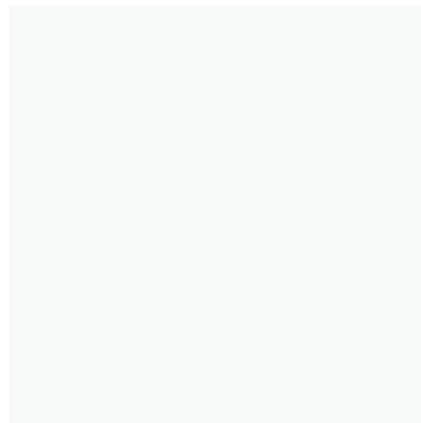
Monoporosa • Porous Single Firing • Monoporeuse • Poröse Einbrandfliese • Monoporosa • Монопороза

Conforme • According to • Conforme • Gemäß • Conforme • Соответствует
UNI EN 14411 - L BIII

 **Lux**
10x10 Modul • 10x30
10x30 Architettura+

Monocottura • Single Firing • Monocuisson • Einmalbrand • Monococción • Плитка Однократного Обжига

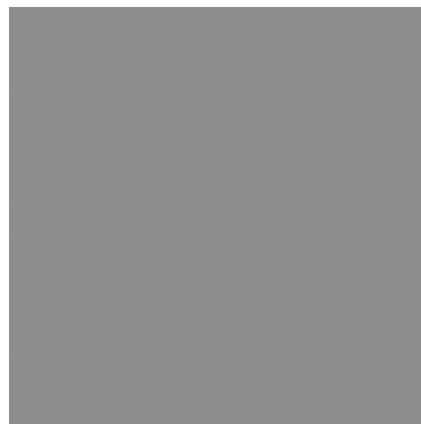
Conforme • According to • Conforme • Gemäß • Conforme • Соответствует
UNI EN 14411 - K BIII



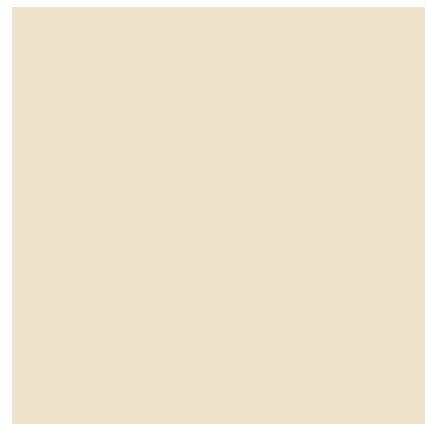
Arch.Bianco (Bianco Classic New)



Arch.Ghiaccio



Arch.Cemento (Lanci)



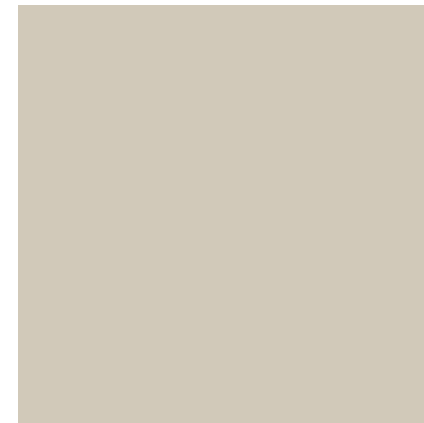
Arch.Avorio (Antelami New)



Arch.Ambra (Bill)



Arch.Ocra (Herrera)



Arch.Perla (Cigoli)



Arch.Grigio (Aalto New)



Arch.Fumo



Arch.Sabbia



Arch.Rosso



Arch.Ametista



Arch.Verde



Arch.Giada (Malevic)



Arch.Pistacchio



SystemC – Architettura

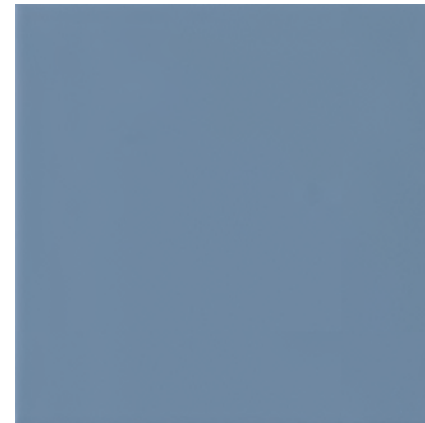
- Monoporosa • Porous Single Firing • Monoporeuse • Poröse Einbrandfliese • Monoporosa • Монопороза
 - Monocottura • Single Firing • Monocuisson • Einmalbrand • Monococción • Плитка Однократного Обжига



Arch.Aqua



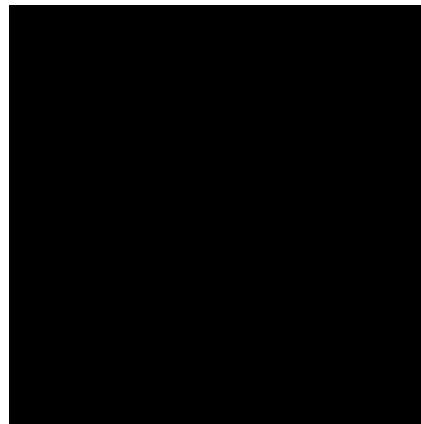
Arch.Turchese



Arch.Blu



Arch.Cobalto



Arch.Nero (Wright New)

Formati • Sizes • Formats • Formate • Formatos • Форматы



20x20

- ME83 Arch. Bianco (Bianco Classic New)
- MJ27 Arch. Ghiaccio
- ME8X Arch. Perla (Cigoli)
- ME81 Arch. Grigio (Aalto New)
- MJ28 Arch. Fumo
- ME80 Arch. Cemento (Lanci)
- ME8Y Arch. Avorio (Antelami New)
- MJ2J Arch. Sabbia
- ME8C Arch. Ambra (Bill)
- ME77 Arch. Odra (Herrera)
- MJ29 Arch. Rosso
- MJ2N Arch. Ametista
- MJ2D Arch. Verde
- MJ2C Arch. Turchese
- ME8N Arch. Giada (Malevic)
- MJ2G Arch. Pistacchio
- MJ2E Arch. Aqua
- MJ2B Arch. Blu
- MJ2A Arch. Cobalto
- ME8Z Arch. Nero (Wright New)



10x10 Modul

- ME90 Arch. Bianco (Bianco Classic New)



10x10 Modul Punto Colla

- MCYE Arch. Bianco (Bianco Classic New)



10x30

- KYWU Arch. Bianco (Bianco Classic New)
- MJ0A Arch. Grigio (Aalto New)
- MJOB Arch. Fumo
- KYWX Arch. Cemento (Lanci)
- KYWY Arch. Avorio (Antelami New)
- MJ0F Arch. Odra (Herrera)
- MJ0K Arch. Turchese
- KYVV Arch. Nero (Wright New)



10x30 Lux Architettura+

- MJAX Arch. Bianco (Bianco Classic New)*



10x30 Lux Architettura+

- KJ9S Arch. Bianco (Bianco Classic New)*

* Struttura a rilievo di spessore complessivo 8,5 mm abbinabile al formato 10x30 di spessore 7,5 mm. • Relief texture with a total thickness of 8.5 mm; can be used along with the 7.5 mm thick 10x30 size • Structure en relief d'une épaisseur totale de 8,5 mm pouvant être associée au format 10x30 de 7,5 mm d'épaisseur • Reliefstruktur mit einer Gesamtstärke von 8,5 mm passend zum Format 10x30 mit 7,5 mm Stärke. • Estructura en relieve de espesor total 8,5 mm combinable con el formato 10x30 de 7,5mm de espesor. • Рельефная структура общей толщиной 8,5 мм, сочетаемая с форматом 10x30 толщиной 7,5мм.

Imballi Packing Emballages Verpackungen Embalajes Упаковки	Pezzi Pieces Stck Pièces Piezas Штуки	Mq Sq. Mt Qm Mq Mq Кв. м	Kg Kr	Scatole Box Karton Boite Caja Коробки	Mq Sq. Mt Qm Mq Mq Кв. м	Kg Kr	Spessore Thickness Dicke Épaisseur Espesor Толщин
20x20	40	1,60	19,48	75	120,00	1.460,92	7,0
10x10 Modul	100	1,00	13,50	72	72,00	972,05	7,0
10x10 Modul Punto Colla	96	1,00	12,96	66	66,02	855,64	7,0
10x30	34	1,02	15,45	66	67,32	1.020,06	7,5
10x30 Lux Struttura MJAX	24	0,72	11,95	72	51,84	860,70	8,5
10x30 Lux Struttura MJ9S	24	0,72	11,95	72	51,84	860,70	8,5

